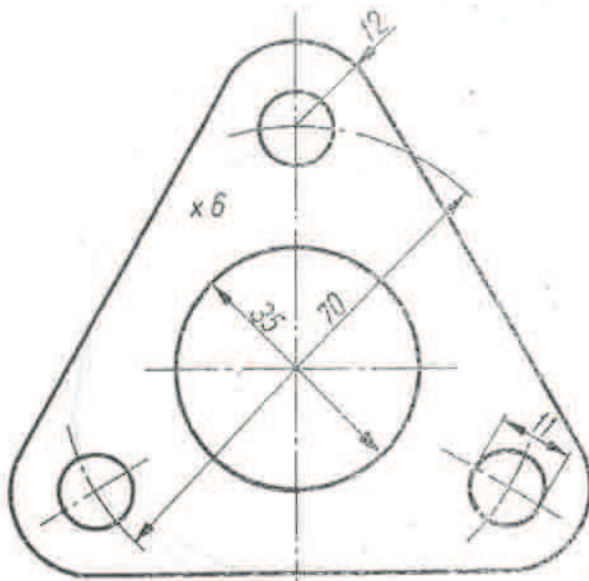
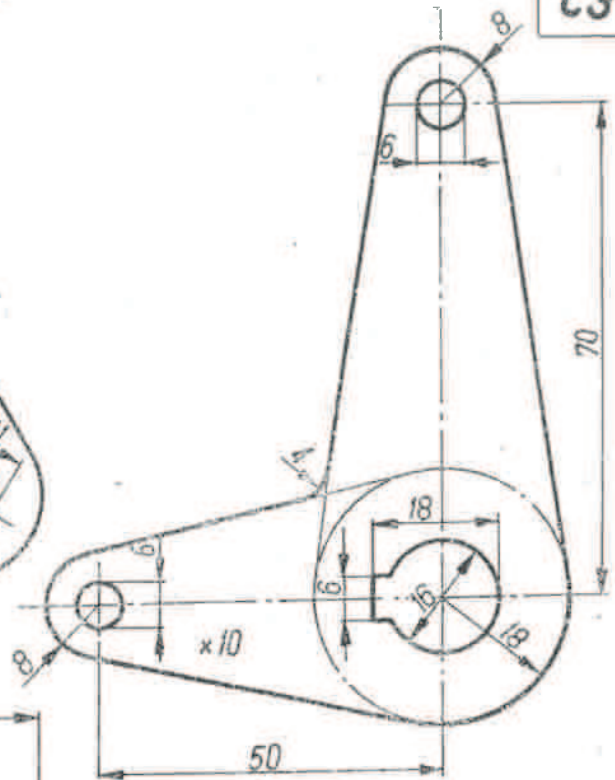


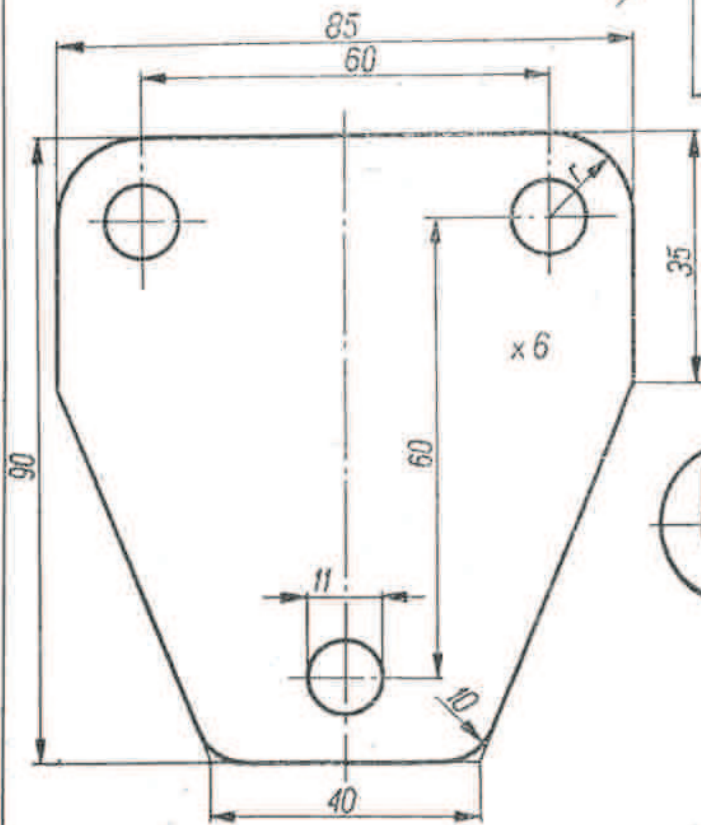
C3



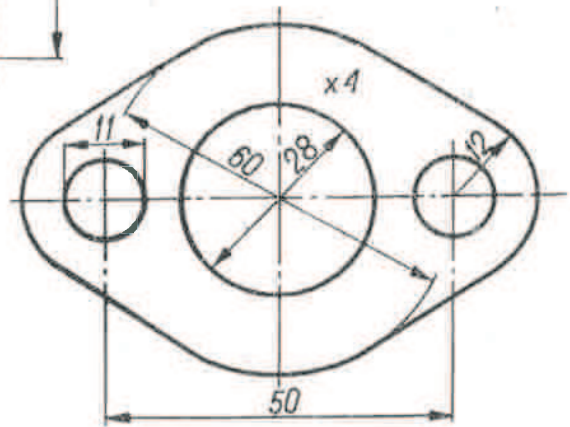
Rys. 1



Rys. 2

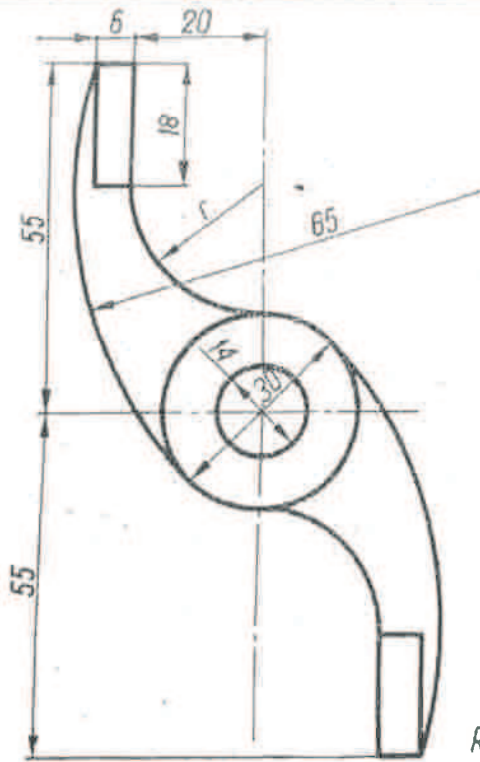


Rys. 3

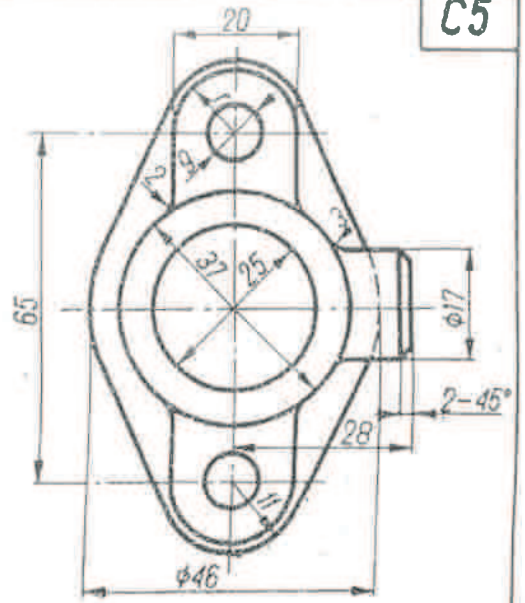


Rys. 4

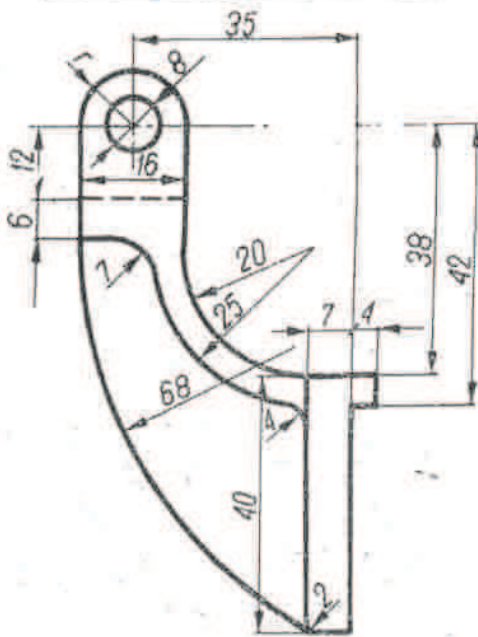
(Tabliczka rysunkowa wg wzoru I)



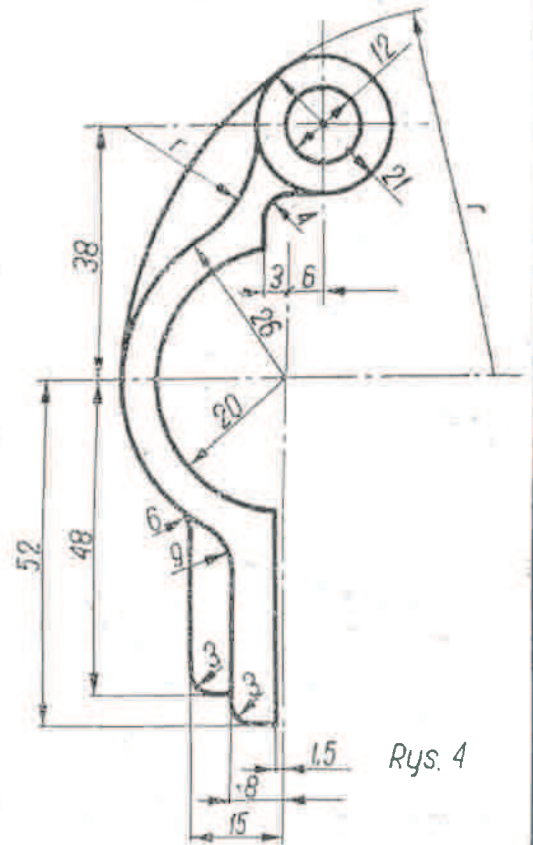
Rys. 1



Rys. 2

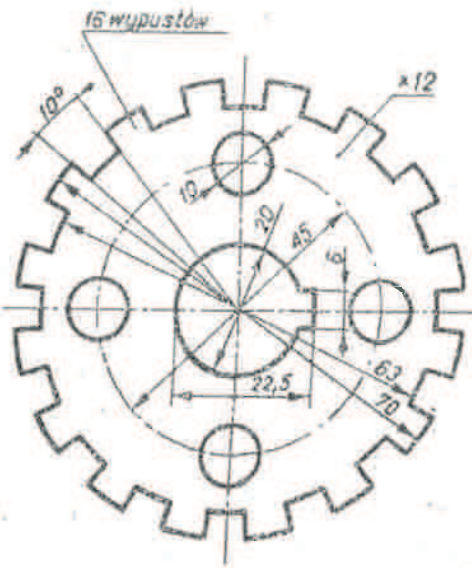


Rys. 3

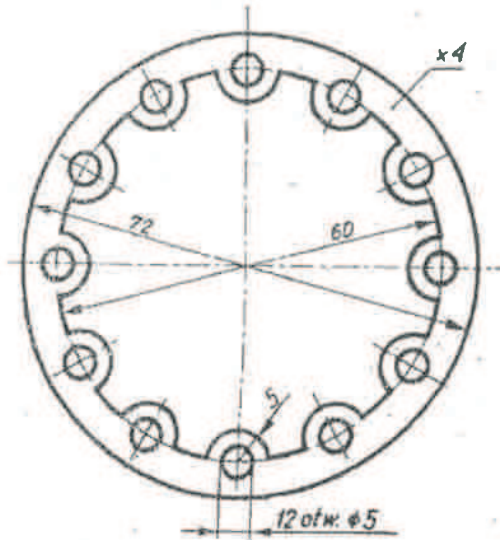


Rys. 4

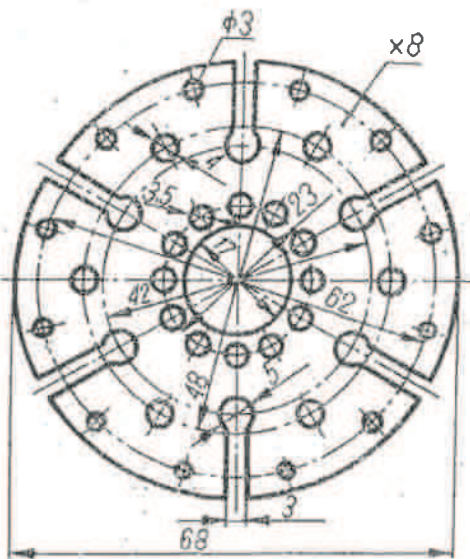
(Tabliczka rysunkowa wg wzoru I)



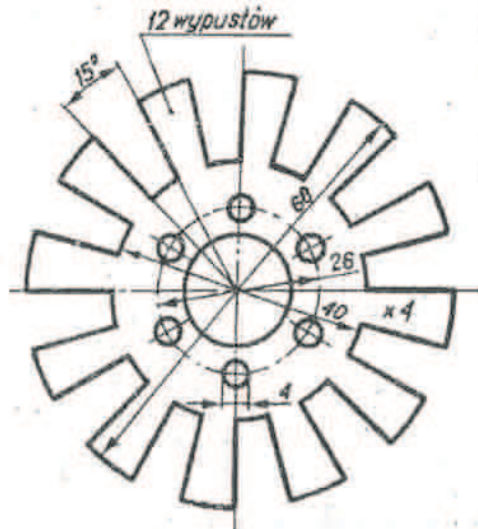
Rys.1



Rys.2

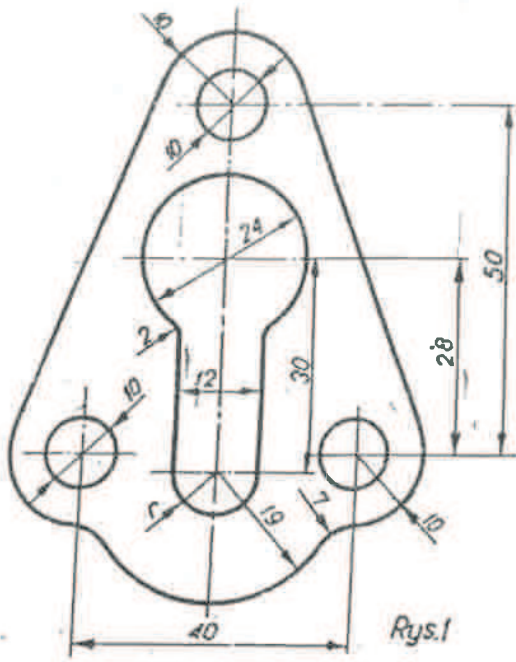


Rys.3

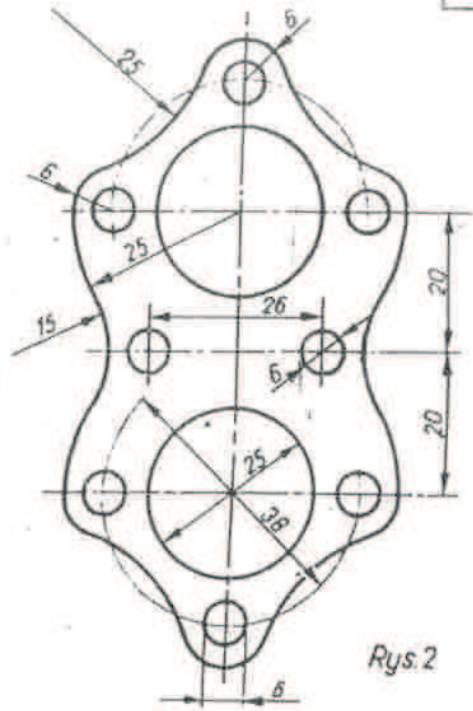


Rys.4

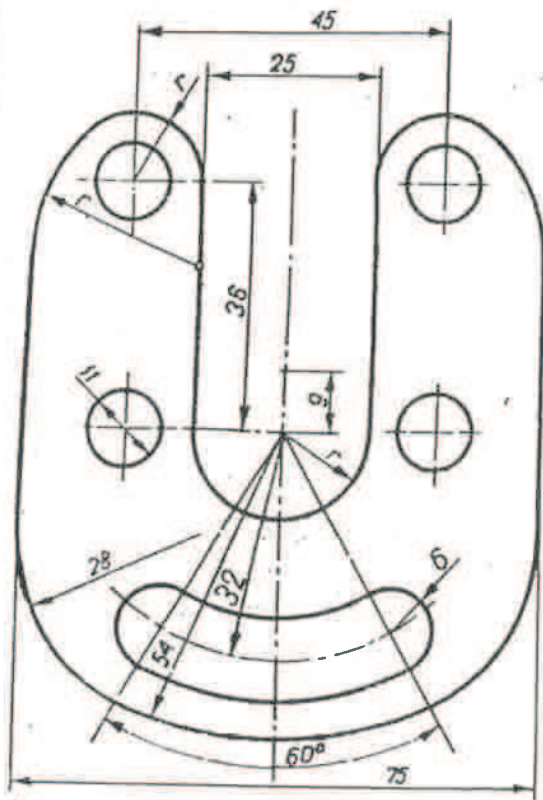
(Tabliczka rysunkowa wg wzoru 1)



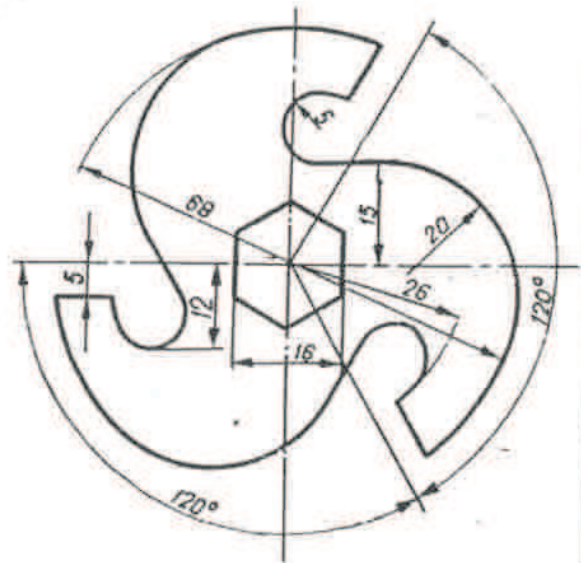
Rys.1



Rys.2



Rys.3

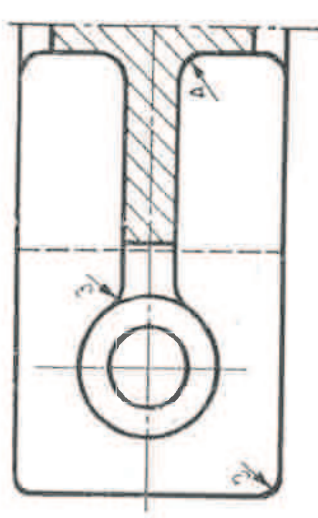
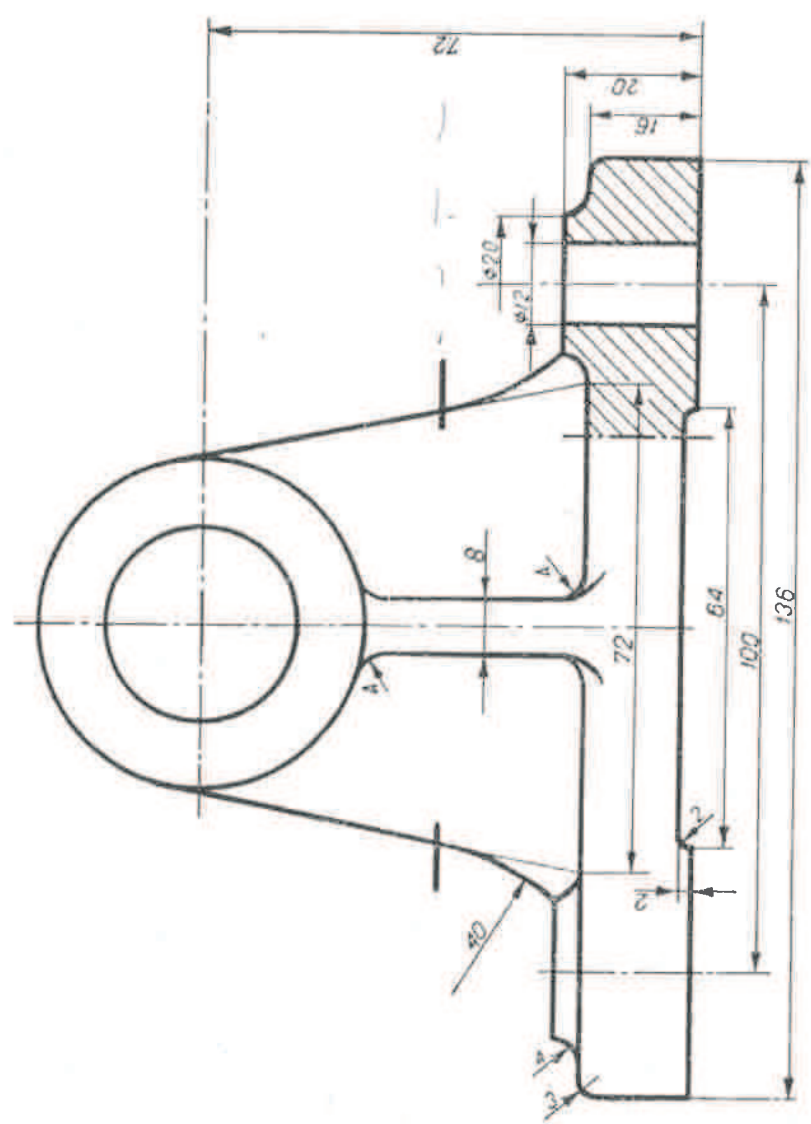
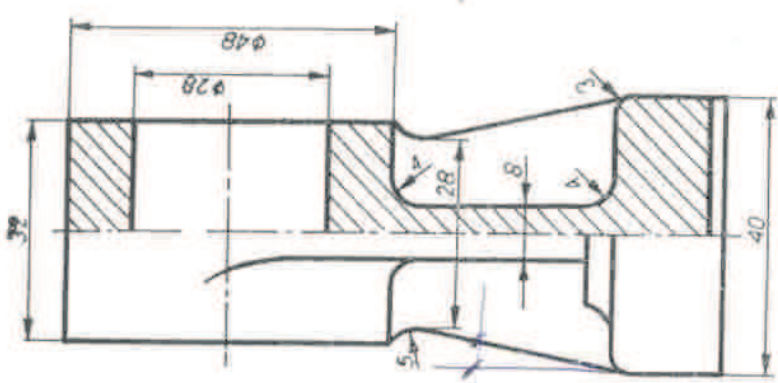


Rys.4

(Tabliczka rysunkowa wg wzoru I)

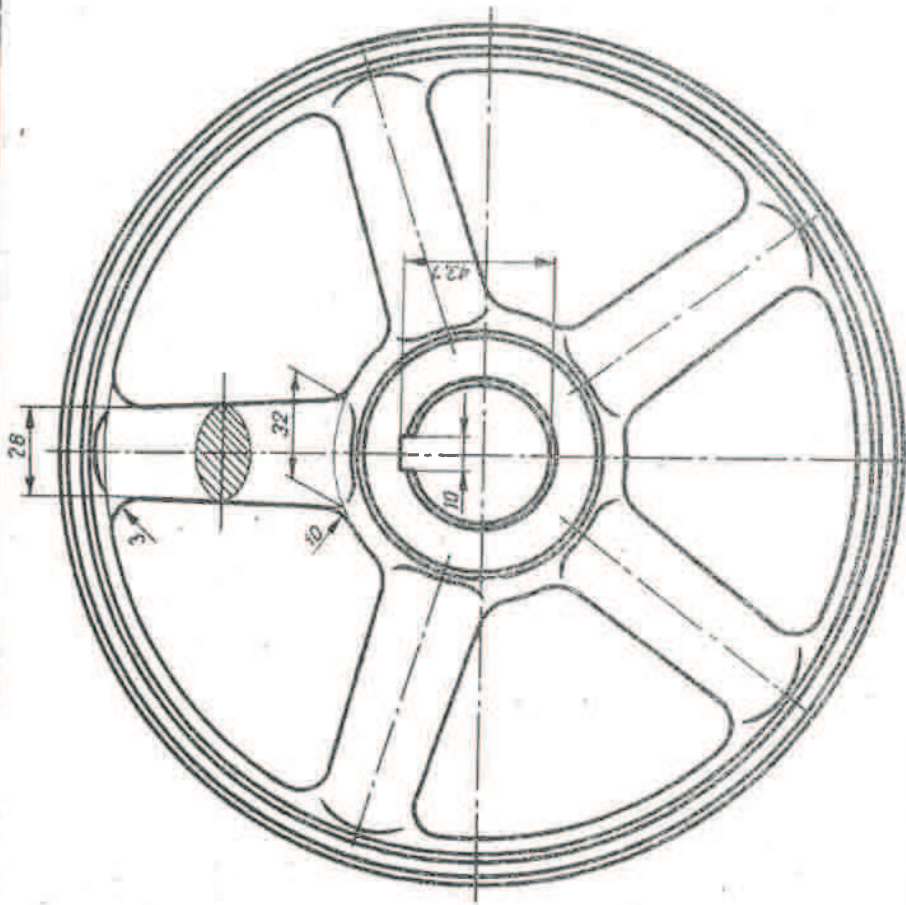
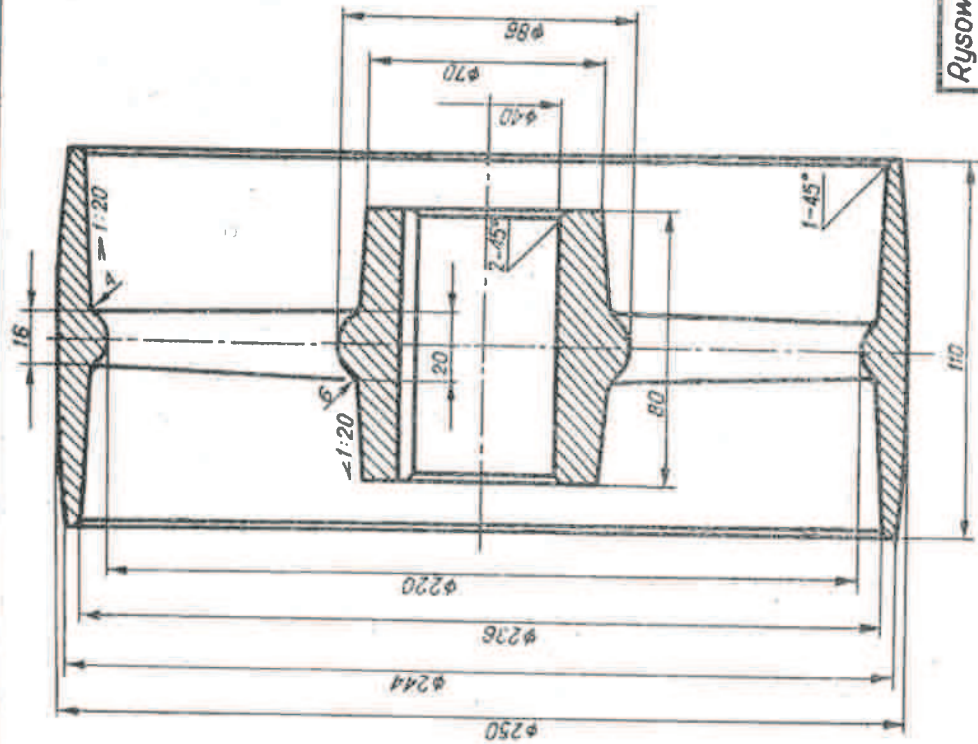
Zajęcia nr 7

F15



Rysował	J. Winiak	20.03.71	Podz.	
Podpis	J. Winiak	20.03.71	1:1	
Znak ewid.	121/M-I-7			
Politechnika Warszawska Studium Zaoczne Wydział Mechaniczny				
Łożyisko oczkowe				Nr rysunku
Rysunek Techniczny				

Zajęcia nr 8



M2

Rysował	J. Winiak	14.05.71	Podz.
Podpis	J. Winiak	14.05.71	1:2
Znak ewid.	121/M-I-7	—	—

Koło pasowe

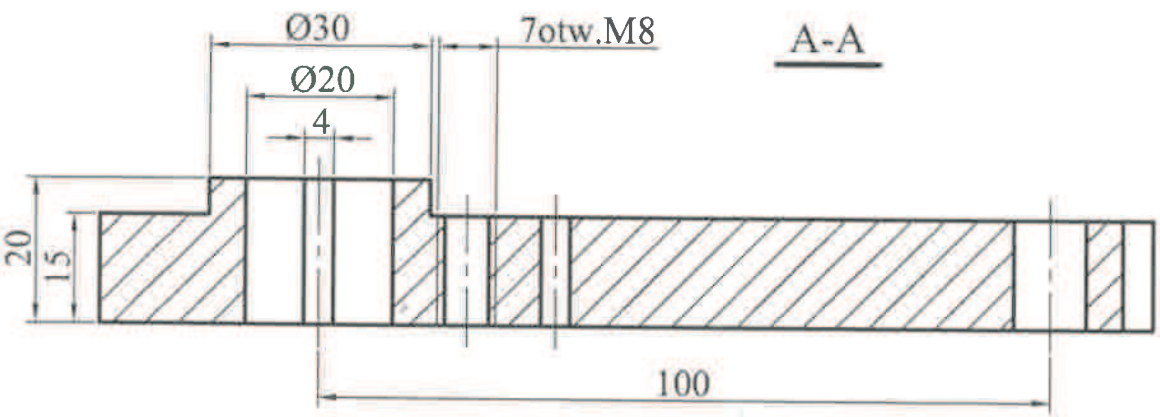
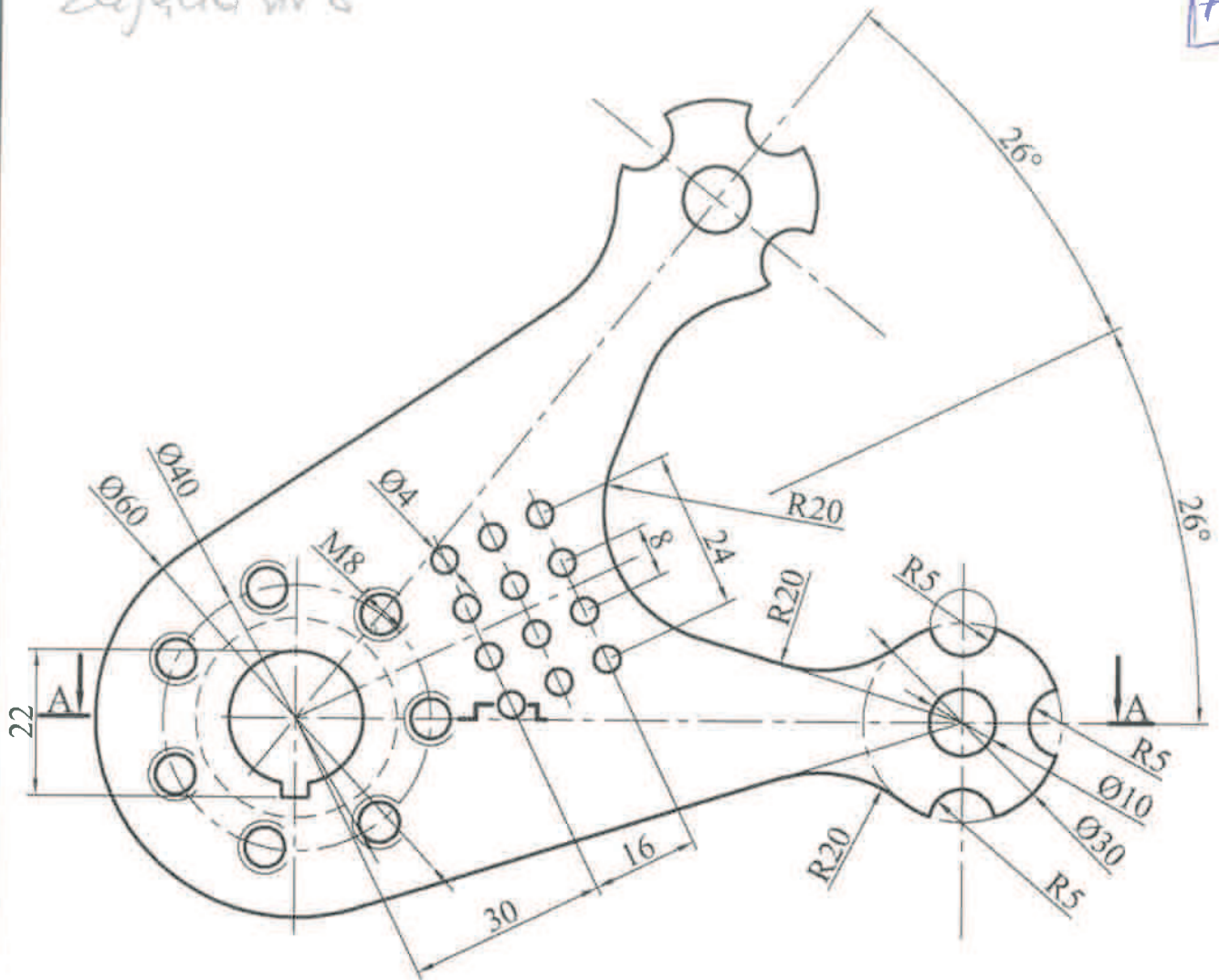
Politechnika Warszawska
Studium Zaocznego
Wydział Mechaniczny

**Rysunek
Techniczny**

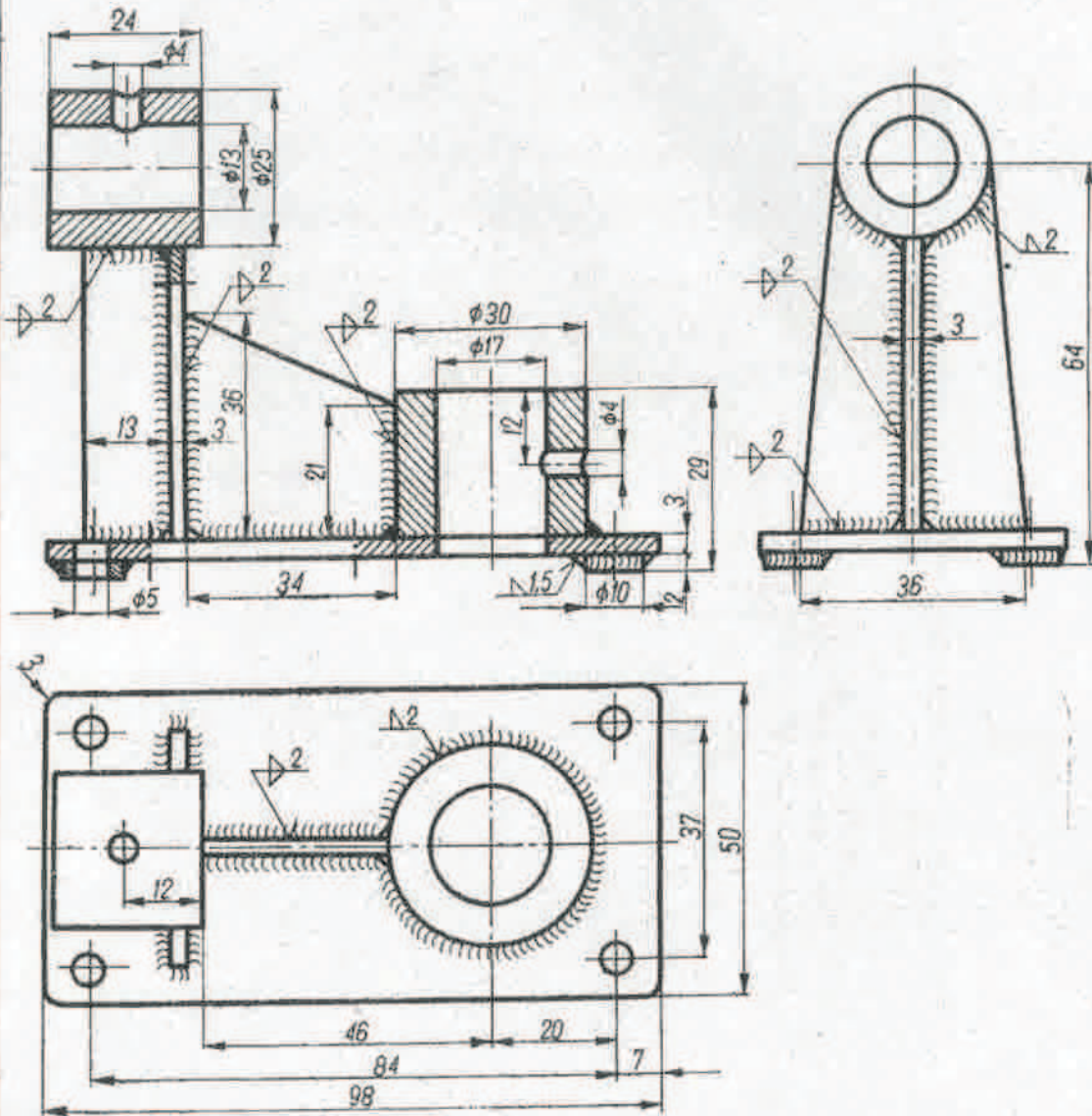
Nr rysunku

Zajęcia nr 8

F10

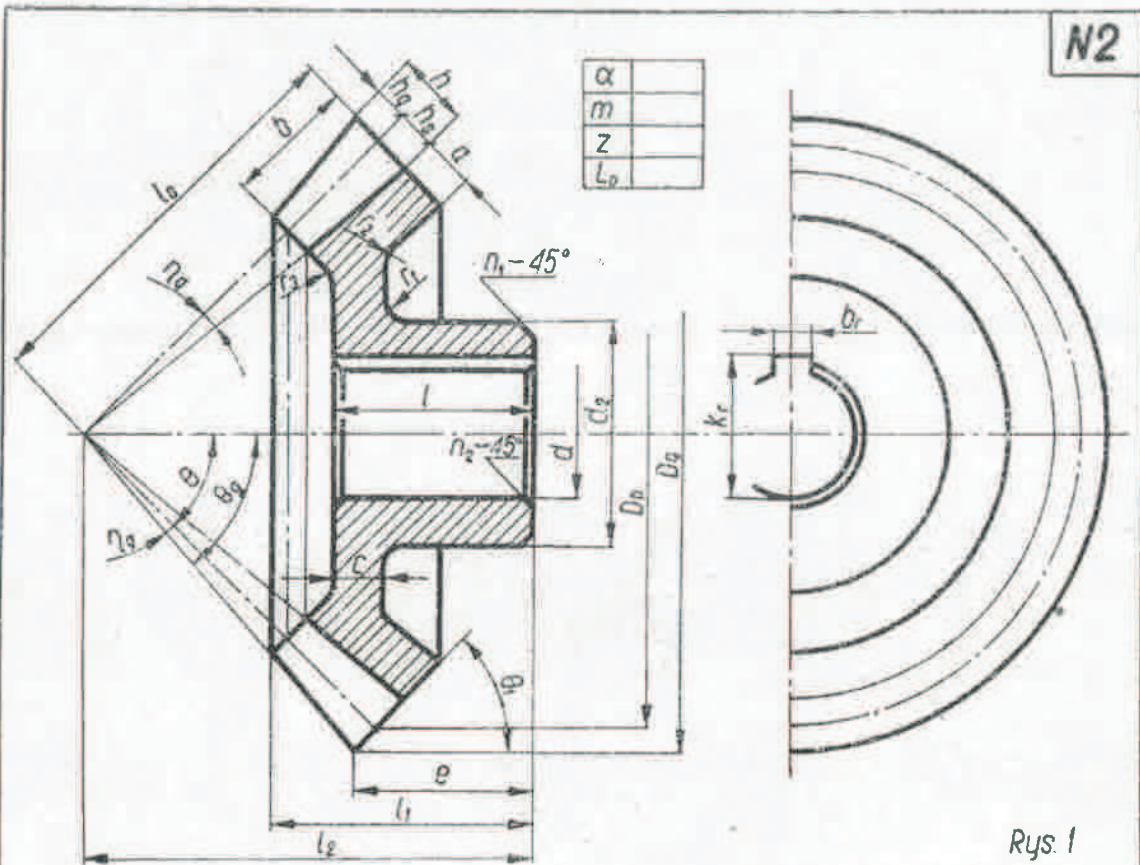


L6

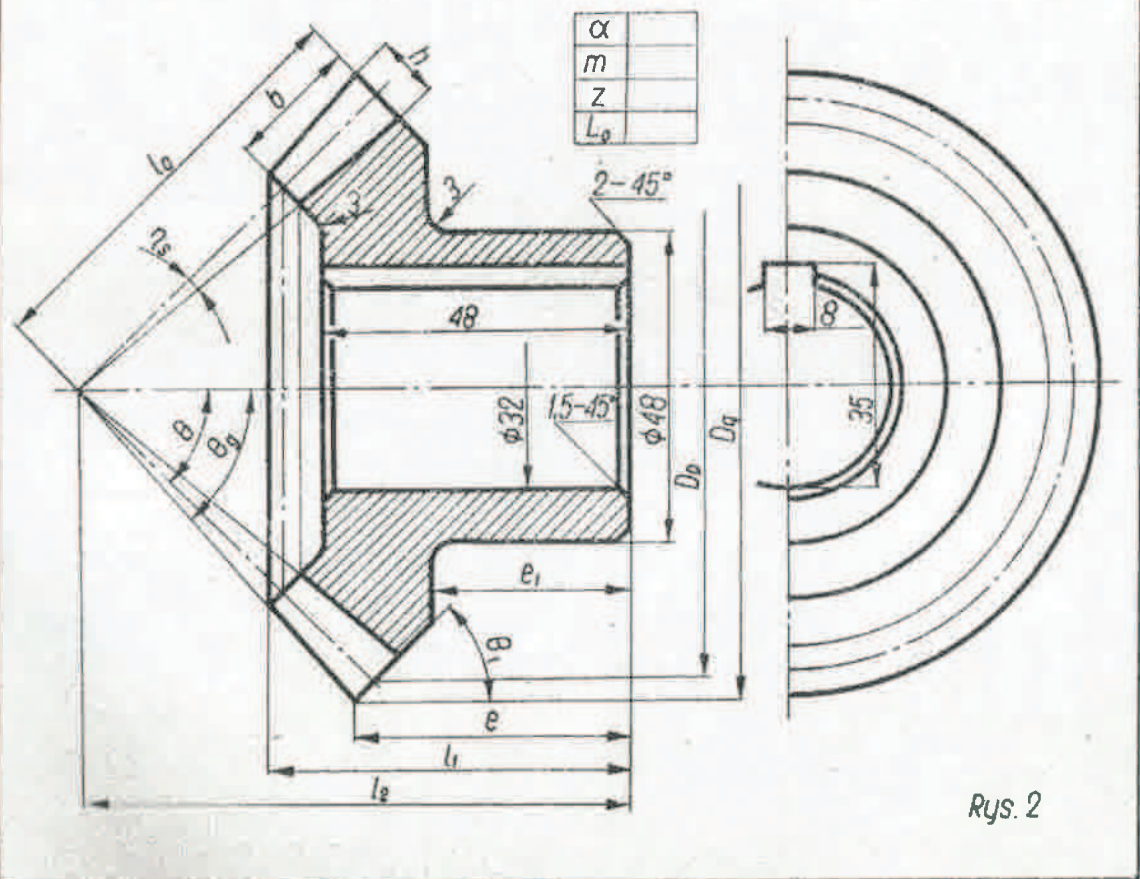


Rysował	J. Winiak	27.06.71	Podz.	Korpus łożyska
Podpis	J. Winiak	27.06.71	1:1	
Znak ewid.	121/M-1-3	-		
Politechnika Warszawska Studium Zaoczne Wydział Mechaniczny			Rysunek Techniczny	Nr rysunku

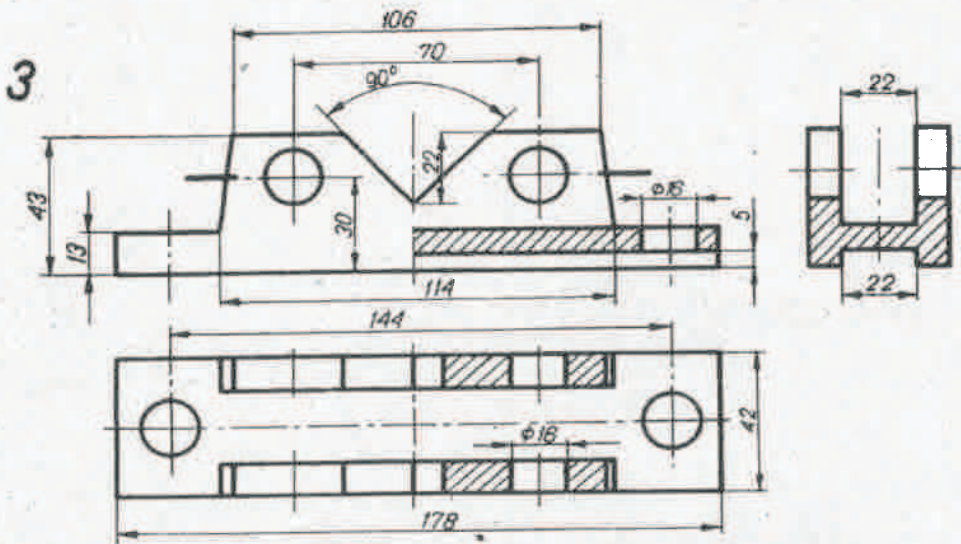
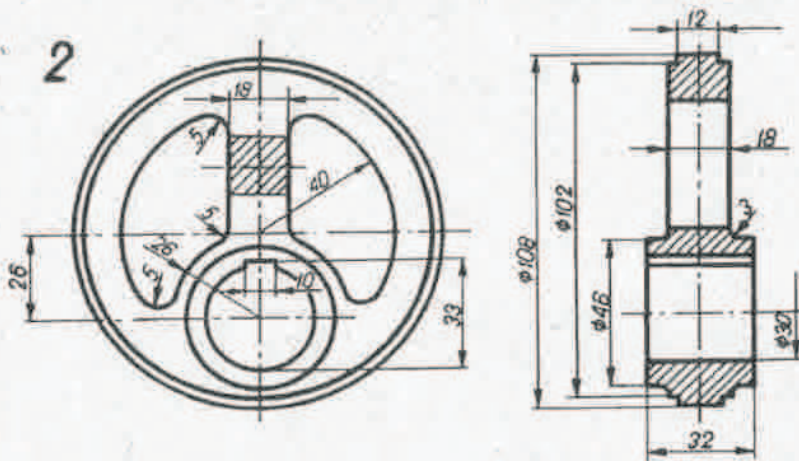
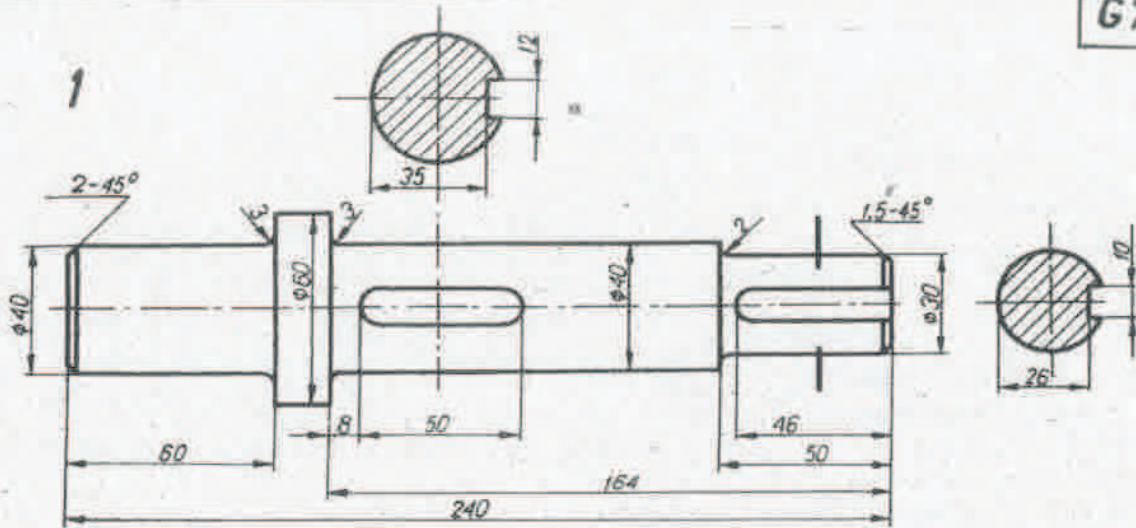
N2



Rys. 1



Rys. 2



Rysował	J. Winiak	20.02.71	Podz.
Podpis	J. Winiak	25.02.71	1:2
Znak ewid.	121/M-I-7		

Wymiarowanie

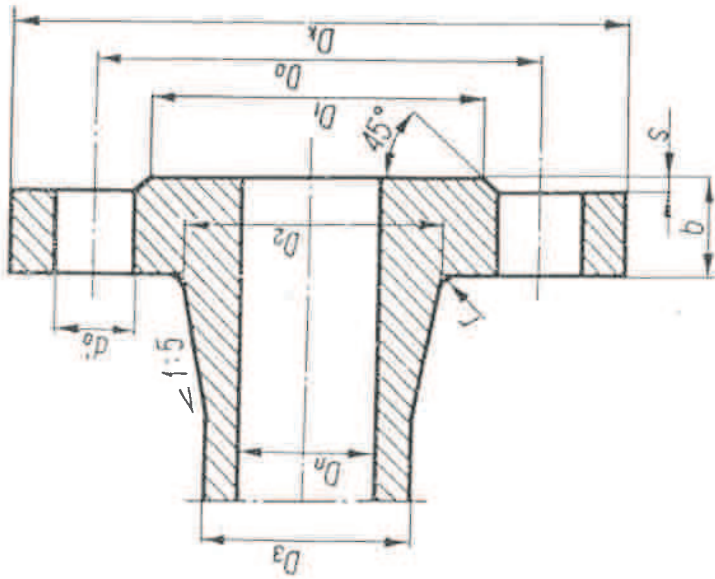
Politechnika Warszawska
 Studium Zaoczne
 Wydział Mechaniczny

Rysunek
 Techniczny

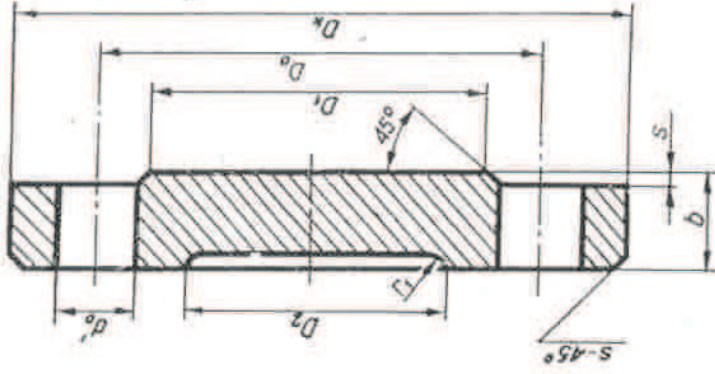
Nr rysunku

Kotnierze i pokrywa

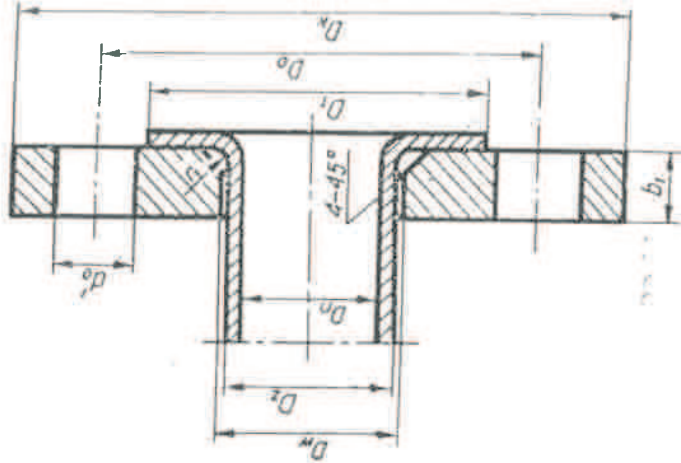
Kotnierz stały



Pokrywa



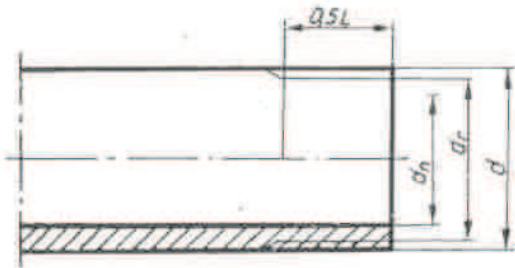
Kotnierz luzny



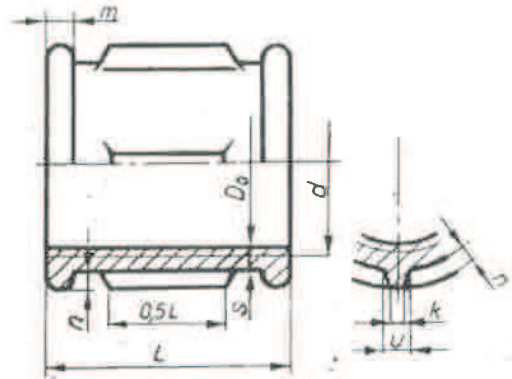
D _n	D _o	D _k	D ₁	D ₂	D ₃	D ₂	D _w	D' ₀	b	b ₁	s	r	Śruba		Podkładka	
													d	ilość		
20	65	90	50	38	30	25	27	12	14	10	2	4	2	10	4	φ11/22×2,5
25	75	100	60	47	35	32	34	12	14	10	2	4	2	10	4	
32	90	120	70	56	45	38	41	14	16	12	2	4	3	12	4	
40	100	130	80	64	52	45	48	14	16	12	3	4	3	12	4	φ13/26×3
50	110	140	90	74	65	57	60	14	16	12	3	4	3	12	4	

Kształtki

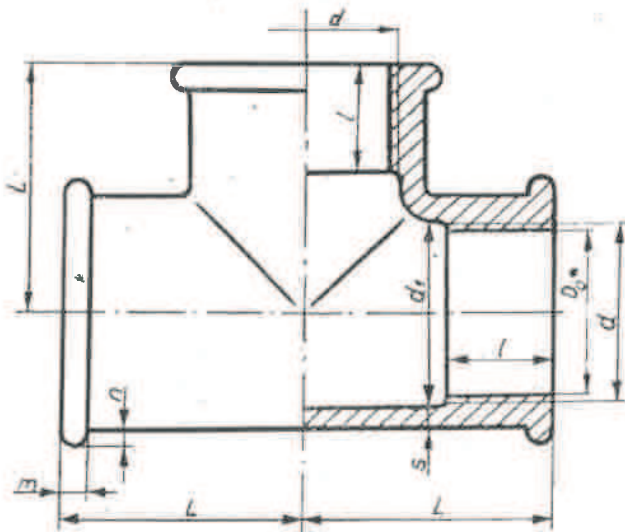
Czop rury



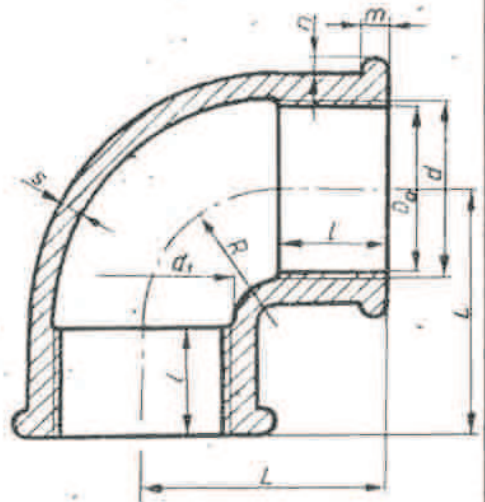
Złączka normalna



Trójnik



Kolano



Srednica nominalna d_n	Srednica gwintu rury lub złączki d	Srednica rdzenia rury lub otworu złączki $d_r = D_o$	d_i	L	l	s	m	n	k	u	R
1/2"	20,9	18,6	21,5	32	14	2,8	3,5	2	2	4	16
3/4"	26,4	24,1	27,0	36	16	3,0	4	2,5	2	4	20
1"	33,2	30,3	34,0	40	18	3,3	4	2,5	2,5	4,5	24
1 1/4"	41,9	39,0	42,5	46	20	3,6	4	3	2,5	5	30
1 1/2"	47,8	44,8	48,5	52	22	4,0	4	3	3	5	34
2"	59,6	56,6	60,5	60	24	4,5	5	3,5	3	6	41
2 1/2"	75,2	72,2	76,5	72	27	5,0	5	3,5	3,5	6,5	50
3"	87,9	84,9	90,0	82	30	5,5	6	4	4,0	7,0	60